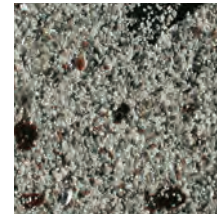
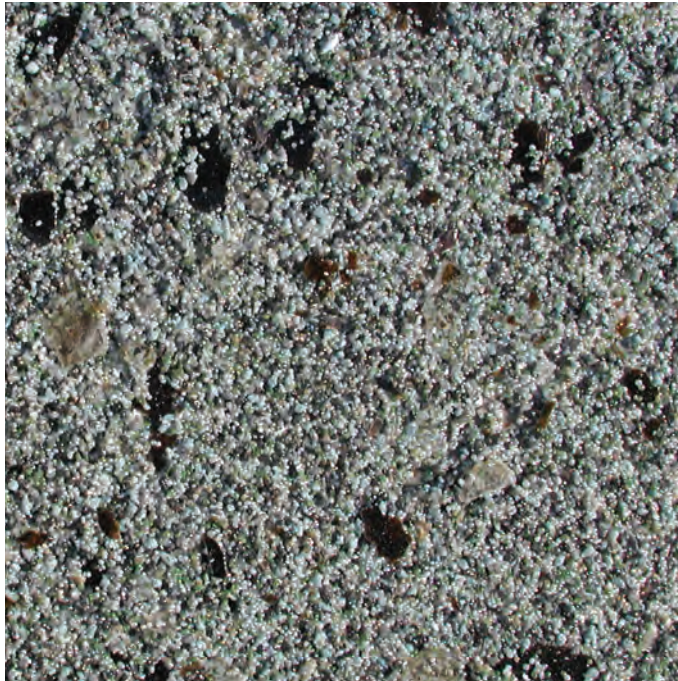


Alumina Finish

PRODUCT BULLETIN



DESCRIPTION

Factory-mixed, reflective stone finish consisting of colored aggregate and large black mica flakes in a 100% acrylic transparent binder. Available in 10 standard colors. ALUMINA Finish provides a classic granite or marble-like textured finished appearance.

COLORS

Available in 10 standard colors

PACKAGING

31.7 kg per 19-liter pail (70 lbs per 5-gallon pail)

COVERAGE

(Approximate) 8.4–9.2 m² (90–100 ft²) per pail

USES

1. Provides a protective, weather-resistant and aesthetically pleasing surface color and texture for the Senergy Wall System.
2. Can also be utilized as a textured finish for poured concrete or unit masonry, conventional stucco, Senergy Stucco Wall System, Senergy Cement-Board Stucco™, certain insulating concrete forms, and interior veneer plaster or gypsum wallboard.

| Features | Benefits |
|--|---|
| Incorporates light-reflecting mica chips | Unique sparkling appearance |
| 100% Acrylic polymer chemistry | Long-term durability and weather resistance |
| Simulated stone look | Supports design freedom, reduces cost |
| Does not require a sealer | Saves time and money |
| Weather resistant | Repels water and resists wind-driven rain |

Alumina

TECHNICAL INFORMATION

Consult the Technical Services Department for specific recommendations concerning all other applications. Consult the Senergy website, www.senergy.basf.com, for additional information about products and systems and for updated literature.

MIXING

1. Gently mix the contents of the ALUMINA pail for 1 minute using a low RPM 1/2 inch drill equipped with a mixing paddle such as a Demand Twister or a Windlock B-MEW, B-M1 or B-M9.
2. Additives are not permitted.
3. Close container when not in use.
4. Clean tools with soap and water immediately after use.

APPLICATION

1. Substrate shall be dry, clean, sound and free of releasing agents, paint or other residue or coatings. Verify substrate is flat, free of fins or planar irregularities greater than 6.4 mm in 3 m (1/4" in 10')
2. Apply the proper color-coordinated Senergy TINTED PRIMER per instructions. Allow to cure until dry to the touch before proceeding to the application of the ALUMINA Finish.
3. Apply a tight coat of ALUMINA Finish approximately 1.6 mm (1/16") to 3 mm (1/8") thick, directly to the Senergy Base Coat/ Reinforcing Mesh with a clean, stainless steel trowel.
4. Maintain a wet edge on ALUMINA Finish by applying and leveling continually over the wall surface.
5. Work ALUMINA Finish to corners, joints or other natural breaks and do not allow material to set up within an uninterrupted wall area.
6. Float the ALUMINA finish with a gentle figure-8 motion, cleaning the float often.

LIMITATIONS

1. Protect ALUMINA Finish during transportation and installation to avoid physical damage.
2. Store ALUMINA Finish in a cool, dry place protected from freezing. Store at no less than 10°C (50°F). Protect from extreme heat and direct sunlight. Shelf life is two years when unopened and stored as directed.
3. Do not apply ALUMINA Finish in ambient temperature below 10°C (50°F). Provide supplementary heat during installation and drying period (at least 24 hours after installation and until dry) when temperatures less than 10°C (50°F) prevail.
4. Do not apply ALUMINA Finish to frozen surfaces.
5. Senergy will submit a sample of ALUMINA Finish for color approval only. Samples for job approval must be made in the field by the applicator, and approved prior to ordering.

HEALTH AND SAFETY

Caution

Contains acrylic polymer.

Risk

May cause eye, skin or respiratory irritation. Ingestion may cause irritation.

Precautions

Avoid contact with skin, eyes and clothing. Wash thoroughly after handling. Keep container closed when not in use. DO NOT take internally. Use only with adequate ventilation. Use impervious gloves, eye protection and if the TLV is exceeded or used in a poorly ventilated area, use NIOSH/MSHA approved respiratory protection in accordance with applicable Federal, state and local regulations.

First Aid

1. For eye contact, flush thoroughly with water for at least 15 minutes.
2. For skin contact, wash affected areas with soap and water. If irritation persists, SEEK MEDICAL ATTENTION. Remove and wash contaminated clothing.
3. Inhalation causes physical discomfort, remove to fresh air. If discomfort persists or any breathing difficulty occurs or if swallowed, SEEK IMMEDIATE MEDICAL ATTENTION.

Read Material Safety Data Sheet before using this product.

PROPOSITION 65

This product contains materials listed by the state of California as known to cause cancer, birth defects or other reproductive harm.

VOC Content

19 g/l, or 0.16 lbs/gal less water and exempt solvents.

For medical emergencies only call chemtrec at (800) 424-9300.

Note

BASF Wall Systems is an operating unit of BASF Construction Chemicals, LLC. (herein after referred to as "BASF Wall Systems")

Residential Policy

On one and two-family residential framed construction, BASF Wall Systems requires that the wall system selected be one that includes provisions for moisture drainage. The choices include Senturion® line of water managed EIFS, commercial Senerflex® Wall Systems integrating moisture management features, Senergy Stucco Wall System, and Senergy Cement-Board Stucco™ Systems. Senergy Exterior Surfacing Systems for insulating concrete forms are also acceptable. There are no exceptions to this policy. Under no circumstances will BASF Wall Systems warrant the use of any other system on this type of construction without expressed written authorization from BASF Wall Systems [Residential construction using EIFS on masonry (CMU) or poured concrete does not require the additional water management provisions described above.] See the Senergy Residential Policy Bulletin for a more detailed discussion of this topic. Consult BASF Wall Systems Technical Services Department for specific recommendations concerning all other applications. Consult the Senergy website, www.senergy.basf.com for additional information about products and systems and for updated literature.

Disclaimer

This information and all further technical advice are based on BASF Wall Systems' present knowledge and experience. However, BASF assumes no liability for providing such information and advice including the extent to which such information and advice may relate to existing third party intellectual property rights, especially patent rights. In particular, BASF Wall Systems disclaims any and all CONDITIONS AND WARRANTIES, WHETHER EXPRESS OR IMPLIED, INCLUDING THE IMPLIED WARRANTIES OF FITNESS FOR A PARTICULAR PURPOSE OR MERCHANTABILITY. BASF WALL SYSTEMS SHALL NOT BE RESPONSIBLE FOR CONSEQUENTIAL, INDIRECT OR INCIDENTAL DAMAGES (INCLUDING LOSS OF PROFITS) OF ANY KIND. BASF Wall Systems reserves the right to make any changes according to technological progress or further developments. It is the customer's responsibility and obligation to carefully inspect and test any incoming goods. Performance of the product(s) described herein should be verified by testing and carried out only by qualified experts. It is the sole responsibility of the customer to carry out and arrange for any such testing. Reference to trade names used by other companies is neither a recommendation, nor an endorsement of any product and does not imply that similar products could not be used.

BASF Wall Systems

3550 St. Johns Bluff Road South
Jacksonville, FL 32224-2614
Phone 800 • 221 • 9255
Fax 904 • 996 • 6300
www.senergy.basf.com